

ONTOGENY SCHOOL OF EXCELLENCE, SONIPAT

2023 | April



NO. OF WORKING DAYS-18

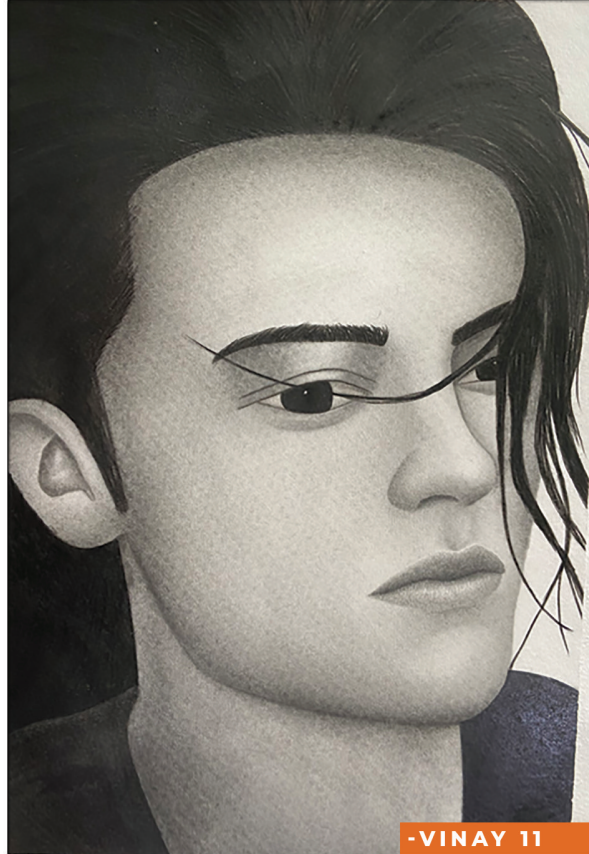
MONTH-ART & CRAFT

SUNDAY	MONDAY	TUESDAY	WEDNESDAY	THURSDAY	FRIDAY	SATURDAY
						1
2	3	4	5	6	7	8
	REOPENING OF THE SCHOOL (G1-9& 11) SHALA PRAVESH	MAHAVIR JAYANTI			GOOD FRIDAY	SECOND SATURDAY
9	10	11	12	13	14	15
				S.A BAISAKHI	DR. AMBEDKAR JAYANTI	
16	17	18	19	20	21	22
	I.C WOOLLEN DOLL G1-3 THALI DECORATION G4-6 WALL HANGINGS G7-9 PLASTIC BOTTLE CRAFT G10-12	INTER SCHOOL CRICKET U11,14&16	INTER SCHOOL CRICKET U11,14&16	INTER SCHOOL CRICKET U11,14&16	INTER SCHOOL CRICKET U11,14&16	EID-UL-FITAR
23	24	25	26	27	28	29
	I.H MASK MAKING G1-3 MATKI DECORATION G4-6 BANDHANWAR G7-9 LIPPAN ART G10-12	INTER SCHOOL FOOTBALL U11,14&17	INTER SCHOOL FOOTBALL U11,14&17	INTER SCHOOL FOOTBALL U11,14&17		WORKING DAY FOR STUDENTS
30						

IC-INTRA CLASS, S.A-SPECIAL ASSEMBLY, I.H-INTRA HOUSE, I.S-INTER SCHOOL, P.B-PRE BOARD, P.A-PERIODIC ASSESSMENT, P.T.M- PARENT TEACHER MEETING

ONTOGENY SCHOOL OF EXCELLENCE, SONIPAT

2023 | May



NO. OF WORKING DAYS-21

MONTH-SANSKRIT & FRENCH

SUNDAY	MONDAY	TUESDAY	WEDNESDAY	THURSDAY	FRIDAY	SATURDAY
	1 S.A Labour Day	2 MINI OLYMPICS G4-5	3	4 I.H TAEKWONDO G1-12	5 BUDHA PURNIMA	6 ORIENTATION G1-5
7	8 I.C श्लोक वाचन G5-6 कविति वाचन G7-8 G5 - Self Introduction G6 - Describe own Family G7&8 - Describe own City	9	10 KHELOTSAV U5,8,10,12&14	11 KHELOTSAV U5,8,10,12&14	12 S.A MOTHER'S DAY I.H SOLO DANCE (CLASSICAL) G5-11	13 SECOND SATURDAY
14	15 INVESTITURE CEREMONY	16	17	18	19 I.H संस्कृत नाटक G5-8 SING A FRENCH SONG G5-8	20 SUMMER BREAK COMMENCES FOR G1-5 ORIENTATION G6-8
21	22	23	24	25	26	27 SUMMER BREAK COMMENCES FOR G6-8 ORIENTATION G9&11
28	29 TRIP/EXCURSION	30 TRIP/EXCURSION PTM & ORIENTATION G10&12	31 TRIP/EXCURSION SUMMER BREAK COMMENCES FOR G9-12			

IC-INTRA CLASS, S.A-SPECIAL ASSEMBLY, I.H-INTRA HOUSE, I.S-INTER SCHOOL, P.B-PRE BOARD, P.A-PERIODIC ASSESSMENT, P.T.M- PARENT TEACHER MEETING

ONTOGENY SCHOOL OF EXCELLENCE, SONIPAT

2023 | June



NO. OF WORKING DAYS-04

SUNDAY	MONDAY	TUESDAY	WEDNESDAY	THURSDAY	FRIDAY	SATURDAY
				1	2	3
				SUMMER VACATION	SUMMER VACATION	SUMMER VACATION
4	5	6	7	8	9	10
SUMMER VACATION	SUMMER VACATION	SUMMER VACATION	SUMMER VACATION	SUMMER VACATION	SUMMER VACATION	SUMMER VACATION
11	12	13	14	15	16	17
SUMMER VACATION	SUMMER VACATION	SUMMER VACATION	SUMMER VACATION	SUMMER VACATION	SUMMER VACATION	SUMMER VACATION
18	19	20	21	22	23	24
SUMMER VACATION	SUMMER VACATION	SUMMER VACATION	SUMMER VACATION	SUMMER VACATION	SUMMER VACATION	SUMMER VACATION
25	26	27	28	29	30	
SUMMER VACATION	SCHOOL REOPENS G6-12			BAKRI ID/ EID AL-ADHA		

IC-INTRA CLASS, S.A-SPECIAL ASSEMBLY, I.H-INTRA HOUSE, I.S-INTER SCHOOL, P.B-PRE BOARD, P.A-PERIODIC ASSESSMENT, P.T.M- PARENT TEACHER MEETING

ONTOGENY SCHOOL OF EXCELLENCE, SONIPAT



NO. OF WORKING DAYS-21

MONTH-SCIENCE

SUNDAY	MONDAY	TUESDAY	WEDNESDAY	THURSDAY	FRIDAY	SATURDAY
						1 WORKSHOP FOR TEACHERS
2	3 SCHOOL REOPENS G1-5	4	5	6	7 FOUNDER'S DAY	8 SECOND SATURDAY
9	10 I.C BEST OUT OF WASTE G1-12	11	12	13	14 PA-1	15
16	17 PA-1	18 PA-1	19 PA-1	20 PA-1	21 PA-1	22
23	24	25	26	27	28 I.H SWIMMING G1-12	29 MUHARRAM
30	31 I.H SCIENCE QUIZ G1-12					

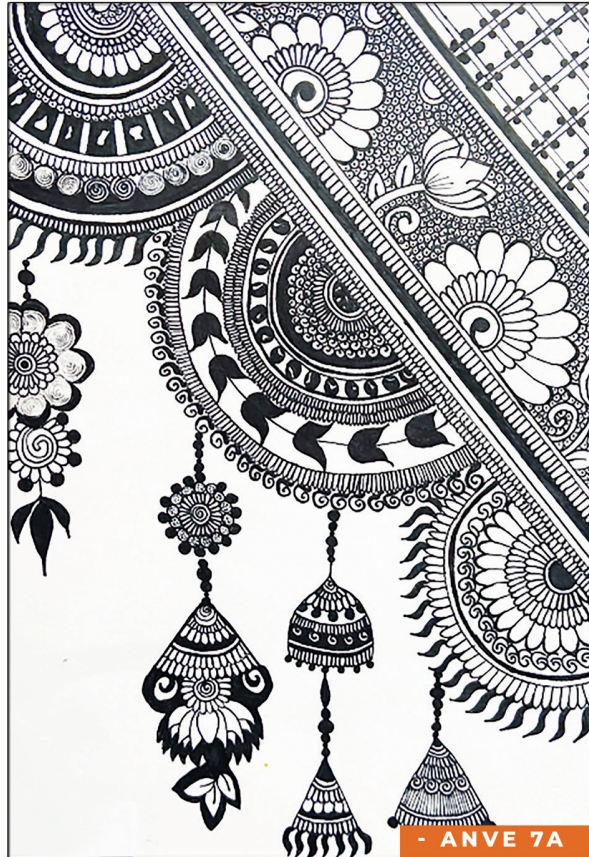
IC-INTRA CLASS, S.A-SPECIAL ASSEMBLY, I.H-INTRA HOUSE, I.S-INTER SCHOOL, P.B-PRE BOARD, P.A-PERIODIC ASSESSMENT, P.T.M- PARENT TEACHER

July

2023

ONTOGENY SCHOOL OF EXCELLENCE, SONIPAT

2023 | August



- ANVE 7A

NO. OF WORKING DAYS-22

MONTH-ENGLISH

SUNDAY	MONDAY	TUESDAY	WEDNESDAY	THURSDAY	FRIDAY	SATURDAY
		1	2	3	4	5
						PTM
						EXHIBITION
6	7	8	9	10	11	12
	I.C EXTEMPORE G1-3 CONCOCT & ACT A STORY G4-6 SOLO POETRY G7-9 DECLAMATION G10-12	I.H CRICKET G1-12	I.H CRICKET G1-12	I.H CRICKET G1-12	I.H CRICKET G1-12	SECOND SATURDAY
13	14	15	16	17	18	19
	S.A INDEPENDENCE DAY I.H GROUP DANCE G5-11	INDEPENDENCE DAY				WORKING DAY FOR STUDENTS
20	21	22	23	24	25	26
	I.H POETRY RECITATION G1-3 SKIT G4-6 DEBATE G7-9 SHAKESPEAREAN PLAY G10-12			I.S TAEKWONDO	I.S TAEKWONDO	WORKSHOP FOR TEACHERS
27	28	29	30	31		
		S.A RAKSHA BANDHAN	RAKSHA BANDHAN			

IC-INTRA CLASS, S.A-SPECIAL ASSEMBLY, I.H-INTRA HOUSE, I.S-INTER SCHOOL, P.B-PRE BOARD, P.A-PERIODIC ASSESSMENT, P.T.M- PARENT TEACHER MEETING

2023 | September

ONTOGENY SCHOOL OF EXCELLENCE, SONIPAT



NO. OF WORKING DAYS-19

MONTH-HINDI

SUNDAY	MONDAY	TUESDAY	WEDNESDAY	THURSDAY	FRIDAY	SATURDAY
					1 I.H SKATING	2
3	4	5 S.A TEACHER'S DAY	6 S.A JANMASHTAMI	7 JANMASHTMI	8 I.S SKATING U8,10,12&14	9 SECOND SATURDAY
10	11 IC आत्मपरिचय 1-2 मौखिक कहानी अभिनय 3-5 चरित्र अभिनय 6-8 आयुष्माञ्चन 9-10	12	13 S.A HINDI DIWAS	14	15 HALF YEARLY EXAMINATION	16 WORKSHOP FOR TEACHERS
17	18 HALF YEARLY EXAMINATION	19 HALF YEARLY EXAMINATION	20 HALF YEARLY EXAMINATION	21 HALF YEARLY EXAMINATION	22 HALF YEARLY EXAMINATION	23
24	25 HALF YEARLY EXAMINATION	26 HALF YEARLY EXAMINATION	27 HALF YEARLY EXAMINATION	28 EID-E-MILAD	29 HALF YEARLY EXAMINATION	30

IC-INTRA CLASS, S.A-SPECIAL ASSEMBLY, I.H-INTRA HOUSE, I.S-INTER SCHOOL, P.B-PRE BOARD, P.A-PERIODIC ASSESSMENT, P.T.M- PARENT TEACHER MEETING

2023 | October

ONTOGENY SCHOOL OF EXCELLENCE, SONIPAT



NO. OF WORKING DAYS-21

MONTH-HINDI

SUNDAY	MONDAY	TUESDAY	WEDNESDAY	THURSDAY	FRIDAY	SATURDAY
1	2	3	4	5	6	7
	MAHATMA GANDHI JAYANTI	PICNIC/ TOUR	PICNIC/ TOUR	PICNIC/ TOUR		
8	9	10	11	12	13	14
					I.H LAWN TENNIS	SECOND SATURDAY
15	16	17	18	19	20	21
	IH लघु कहानी अभिनय G1-2 दोहा चौपाई G 3-5 काव्य सम्मेलन G 6-8 नाटक मंचन G 9-11				S.A DUSSEHRA	PTM
22	23	24	25	26	27	28
	RAM NAVAMI	DUSSEHRA			MUN	MUN
29	30	31				
		S.A HARYANA DAY				

IC-INTRA CLASS, S.A-SPECIAL ASSEMBLY, I.H-INTRA HOUSE, I.S-INTER SCHOOL, P.B-PRE BOARD, P.A-PERIODIC ASSESSMENT, P.T.M- PARENT TEACHER MEETING

2023 | November

ONTOGENY SCHOOL OF EXCELLENCE, SONIPAT



NO. OF WORKING DAYS-20

MONTH-SOCIAL SCIENCE

SUNDAY	MONDAY	TUESDAY	WEDNESDAY	THURSDAY	FRIDAY	SATURDAY
			1 HARYANA DAY	2	3 I.H BASKETBALL	4 DIWALI MELA
5	6 I.C POEM RECITATION G1-3 MAP ACTIVITY G4-12	7	8	9	10 S.A DIWALI	11 SECOND SATURDAY
12 DEEPAWALI	13 VISHVAKARMA DAY	14 GOVARDHAN POOJA	15 BHAI DOOJ	16	17	18 WORKING DAY FOR STUDENTS
19	20 I.H FANCY DRESS COMP G1-3 SSC QUIZ G4-9	21	22	23	24 S.A GURU NANAK JAYANTI	25 ANNUAL SPORTS DAY
26	27 GURU NANAK JAYANTI	28	29	30		

IC-INTRA CLASS, S.A-SPECIAL ASSEMBLY, I.H-INTRA HOUSE, I.S-INTER SCHOOL, P.B-PRE BOARD, P.A-PERIODIC ASSESSMENT, P.T.M- PARENT TEACHER MEETING

2023 | December

ONTOGENY SCHOOL OF EXCELLENCE, SONIPAT



SAGARIKA 5A

NO. OF WORKING DAYS-22

MONTH-MATHEMATICS

SUNDAY	MONDAY	TUESDAY	WEDNESDAY	THURSDAY	FRIDAY	SATURDAY
					1	2
						WORKING DAY FOR STUDENTS
3	4	5	6	7	8	9
	PB-1 (10&12)		PB-1 (10&12)		PB-1 (10&12)	SECOND SATURDAY
	PA-2	PA-2	PA-2	PA-2	PA-2	
10	11	12	13	14	15	16
	PB-1 (10&12)		PB-1 (10&12)		PB-1 (10&12)	WORKSHOP FOR TEACHERS
	PA-2					
17	18	19	20	21	22	23
	I.C HOP SCOTCH ACTIVITY G1-5 MENTAL MATHEMATICS COMPETITION G6-12		I.H SHOW & TELL ACTIVITY G1-5 MATHEMATICAL RANGOLI COMPETITION G6-12		S.A CHRISTMAS	PTM G1-12
24	25	26	27	28	29	30
	CHRISTMAS		I.H MATHEMATICS QUIZ G1-12	PB-2 (10&12)		WINTER BREAK
31						
WINTER BREAK						

IC-INTRA CLASS, S.A-SPECIAL ASSEMBLY, I.H-INTRA HOUSE, I.S-INTER SCHOOL, P.B-PRE BOARD, P.A-PERIODIC ASSESSMENT, P.T.M- PARENT TEACHER MEETING

2024 | January

ONTOGENY SCHOOL OF EXCELLENCE, SONIPAT



TWISHA 1A

NO. OF WORKING DAYS-19

MONTH-COMPUTER

SUNDAY	MONDAY	TUESDAY	WEDNESDAY	THURSDAY	FRIDAY	SATURDAY
	1 NEW YEAR'S DAY	2 WINTER BREAK	3 WINTER BREAK	4 WINTER BREAK	5 SCHOOL REOPENS FOR G10&12 PB-2 (10&12)	6
7	8 SCHOOL REOPENS FOR G6-9 &11 PB-2 (10&12)	9	10 PB-2 (10&12)	11	12 PB-2 (10&12)	13 SECOND SATURDAY
14 MAKAR SANKRANTI	15 SCHOOL REOPENS FOR G1-5 PB-2 (10&12)	16	17	18	19 MOCK TEST G-9&11	20 PTM G10&12
21	22 MOCK TEST G-9&11 I.C KNOW YOUR COMPUTER G1-2 CARD MAKING G3-5 DIGIDOX G4-8 BLOG G9-12	23	24 MOCK TEST G-9&11	25 S.A REPUBLIC DAY	26 REPUBLIC DAY	27 MOCK TEST G-9&11
28	29 MOCK TEST G-9&11 L.H PARTS OF COMPUTER G1-2 CARD MAKING G3-6 PPT G7-11	30	31 MOCK TEST G-9&11			

IC-INTRA CLASS, S.A-SPECIAL ASSEMBLY, I.H-INTRA HOUSE, I.S-INTER SCHOOL, P.B-PRE BOARD, P.A-PERIODIC ASSESSMENT, P.T.M- PARENT TEACHER MEETING

2024 | February

ONTOGENY SCHOOL OF EXCELLENCE, SONIPAT



NO. OF WORKING DAYS-21

SUNDAY	MONDAY	TUESDAY	WEDNESDAY	THURSDAY	FRIDAY	SATURDAY
				1	2	3 FAREWELL
4	5 PB-3 (10-12)	6 FINAL EXAM G-9&11	7 PB-3 (10-12)	8	9 PB-3 (10-12) FINAL EXAM G-9&11	10 SECOND SATURDAY
11	12 PB-3 (10-12) FINAL EXAM G-9&11	13 S.A VASANT PANCHMI	14 VASANT PANCHMI	15 PB-3 (10-12) FINAL EXAM G-9&11	16	17 PB-3 (10-12)
18	19 FINAL EXAM G-9&11	20	21 FINAL EXAM G-9&11	22	23	24 PTM G10&12
25	26	27 FINAL EXAM G1-8	28 FINAL EXAM G1-8	29 FINAL EXAM G1-8		

IC-INTRA CLASS, S.A-SPECIAL ASSEMBLY, I.H-INTRA HOUSE, I.S-INTER SCHOOL, P.B-PRE BOARD, P.A-PERIODIC ASSESSMENT, P.T.M- PARENT TEACHER MEETING

2024 | *March*



IC-INTRA CLASS, S.A-SPECIAL ASSEMBLY, I.H-INTRA HOUSE, I.S-INTER SCHOOL, P.B-PRE BOARD, P.A-PERIODIC ASSESSMENT, P.T.M- PARENT TEACHER MEETING